



HENRI[®]
— THE CREATIVITY CONTINUES... —

Dear Henri Studio Enthusiast!

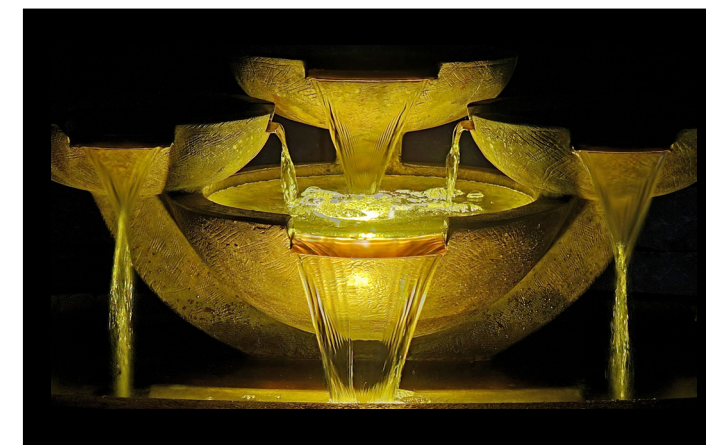
The Creativity Continues at Henri Studio with the addition of **19 new and unique offerings** that are sure to enhance your landscaping creativity. Enjoy!

- Water, water and more water is the theme of the **Milano Fountain**. Multiple tiers, multiple bowls and multiple spills provide water action and sound from any angle.
- The **Triple Clef Fountain's** staggered and ribbed columns add modern drama along with a lightness of being to any landscape. Rippling waters reflect both the daytime sun and our nighttime uplighting.
- Our **Citadel Fountain** stands strong and proud as water ripples over its massive geometric shapes. It's a true statement piece for any garden landscape.
- Our powerful **Granite Falls Fountain** gushes rushing waters over multiple granite boulders enhancing the natural look and sound of your garden oasis.
- Cascading waters, spilling into progressively larger bowls, are the highlight of the **Bolla Fountain** as it provides a beautiful, floating shimmering-pools effect.
- Water plunges from the **Wave Fountain's** apex, pouring itself into a modern two-spill basin. The drama of the wave design along with the secondary spills of the lower basin are pure delight to the eye!
- The **Copperhead Fountain** is true to its name as it winds itself upward to a pinnacle of dancing water and then cascades majestically back to the bottom bowl.
- A garden nymph taking in the beauty of oversized dahlias is the whimsical **Blossom Wall Fountain's** theme. Two copper spills, cascading directly from the dahlia's centers, provide you and our nymph with endless visual joy.
- Love is all we need; and you get it with our quintessential **LOVE Fountain**, incorporating the iconic LOVE statue design, along with a most LOVELY cascade of water.
- Our **Oracle Wall Fountain's** open-air element projects a light and tranquil presence. A very Zen design indeed.
- Bring whimsy to your garden with this playful family of **Totem Frogs** that give their youngest a bird's-eye view, while dad keeps cool and mom goes with the flow. A spitter version has the youngest "spouting off" as well!
- "You lookin' at me?" says our **Otter with Attitude...** His look says it all... And he's available as a spitter too!
- The Henri **Gnome** family expands with the addition of three new awesome garden gnomes!
 - Our **"Football" Gnome** is ready to take on all competitors... in a friendly sort of way, of course!
 - Our **"Golfer" Gnome** is always quiet on the tee box and will keep you company on the 19th hole as well.
 - Our **"Rosie the Gardener" Gnome's** smile will be a constant source of sunshine in your garden!
 - Our **Maple Leaf Birdbath** offers layers of oversized maple leaves shaped into a welcoming respite for all of the birds in the neighborhood.
- Finally, our **Bee/Pollinator Sanctuary** is a true work of art that allows your garden to flourish by providing 100 varying-sized nesting holes for non-stinging bees and pollinators.
 - Concrete provides longevity and an ideal temperature range for pollinators
 - The heavy structure stays in place anywhere in the garden
 - Hardwood plugs at the rear make the holes a safe sanctuary for your garden's winged friends.
 - Always face it southeast to east in the garden
 - Just a blast of water will provide easy clean out after newborn bees have emerged.

Wishing you much outdoor enjoyment!

The Henri Studio Team

Water, water and more water is the theme of the **Milano Fountain**. Multiple tiers, multiple bowls and multiple spills provide water action and sound from any angle.



Brilliant Underwater LED light kit included for shimmering night-time effect.



4038F2 Milano Fountain

20 in. H, 34 in. W, 24 in. F-B

- Shown in Relic Lava (RL)

No. 4038 Milano Top 14. in. H, 30.5 in. W, 24 in. F-B

No. 6038 Basin for Milano 10 in. H, 34 in. W, 24 in. F-B



The **Triple Clef Fountain's** staggered and ribbed columns add modern drama along with a lightness of being to any landscape. Rippling waters reflect both the daytime sun and our nighttime uplighting.



Brilliant Underwater LED light kit included for shimmering night-time effect.



5774F4 Triple Clef Fountain

41 in. H, 36 in. W, 25.5 in. F-B

- Shown in Relic Lava (RL)

- No. 5774A Triple Clef - Small Column 22.5 in. H, 14.5 in. W, 11 in. F-B
- No. 5774B Triple Clef - Medium Column 28 in. H, 14 in. W, 11 in. F-B
- No. 5774C Triple Clef - Tall Column 33 in. H, 23 in. W, 10 in. F-B
- No. 6774 Basin for 3 Column Fountain 12 in. H, 36 in. W, 25.5 in. F-B



Our **Citadel Fountain** stands strong and proud as water ripples over its massive geometric shapes. It's a true statement piece for any garden landscape.



Brilliant Underwater LED light kit included for shimmering night-time effect.



5638F3 Citadel Fountain

46 in. H, 28 in. W, 28 in. F-B

- Shown in Relic Lava (RL)

- No. 5638A Citadel Top Ball 9 in. H, 10 in. W, 10 in. F-B
- No. 5638B Citadel Column 35 in. H, 12 in. W, 12 in. F-B
- No. 6635 Basin for Monolith and Citadel 10 in. H, 28 in. W, 28 in. F-B



Our powerful **Granite Falls Fountain** gushes rushing waters over multiple granite boulders enhancing the natural look and sound of your garden oasis.



4887F2 Granite Falls
 37 in. H, 23.5 in. W, 32 in. F-B
 - Shown in Relic Lava (RL)
 No. 4887A Granite Top 24 in. H, 23.5 in. W, 21 in. F-B
 No. 4887B Basin for Granite Falls 13 in. H, 21 in. W, 32 in. F-B



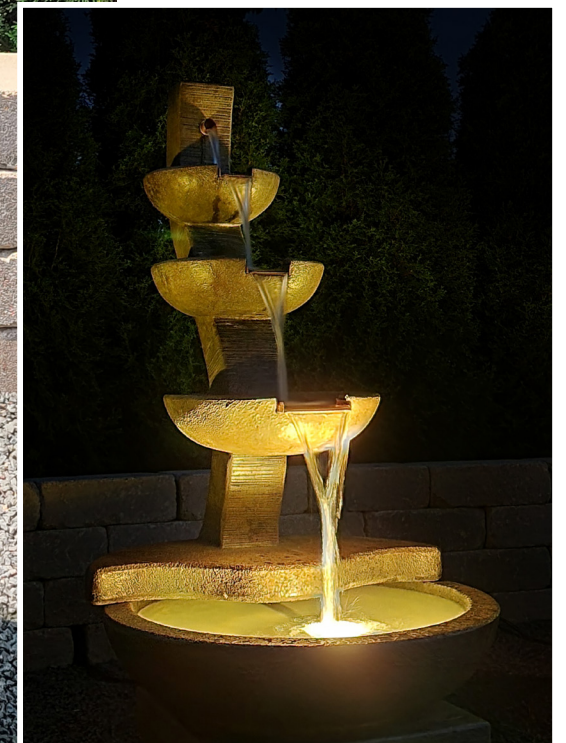
Brilliant Underwater LED light kit included for shimmering night-time effect.



Cascading waters, spilling into progressively larger bowls, are the highlight of the **Bolla Fountain** as it provides a beautiful floating shimmering pools effect.



5019F2 Bolla Fountain
 44.5 in. H, 23 in. W, 23 in. F-B
 - Shown in Relic Nebbia (RN)
 No. 5019 Bolla Top 34 in. H, 23 in. W, 23 in. F-B
 No. 6019 Basin for Bolla 10.5 in. H, 23 in. W, 23 in. F-B



Brilliant Underwater LED light kit included for shimmering night-time effect.



Water plunges from the **Wave Fountain's** apex, pouring itself into a modern two-spill basin. The drama of the wave design along with the secondary spills of the lower basin are pure delight to the eye!



Brilliant Underwater LED light kit included for shimmering night-time effect.



**4039F3
Wave Fountain**

41 in. H, 27 in. W, 27 in. F-B - Shown in Relic Lava (RL)
 No. 4039A Wave Arm 33 in. H, 11 in. W, 23 in. F-B
 No. 4039B Wave Mid Bowl 7 in. H, 21 in. W, 21 in. F-B
 No. 4039C Basin for Wave 14 in. H, 27 in. W, 27 in. F-B



The **Copperhead Fountain** is true to its name as it winds itself upward to a pinnacle of dancing water and then cascades majestically back to the bottom bowl.



Brilliant Underwater LED light kit included for shimmering night-time effect.



**5541F1
Copperhead Fountain**

28 in. H, 31 in. W, 36 in. F-B
 Shown in Relic Nebbia (RN)
 No. 5541 Copperhead single unit 28 in. H, 31 in. W, 36 in. F-B



A garden nymph taking in the beauty of oversized dahlias is the whimsical **Blossom Wall Fountain's** theme. Two copper spills, cascading directly from the dahlia's centers, provide you and our nymph with endless visual joy.



4715F1 Blossom Wall Fountain
37 in. H, 34 in. W, 26 in. F-B

Trevia GreyStone (TR)

No. 4715 Blossom single unit 37 in. H, 34 in. W, 26 in. F-B



Brilliant Underwater LED light kit included for shimmering night-time effect.

Love is all we need; and you get it with our quintessential **LOVE Fountain**, incorporating the iconic LOVE statue design, along with a most LOVELY cascade of water.



Brilliant Underwater LED light kit included for shimmering night-time effect.

4419F1 LOVE Fountain

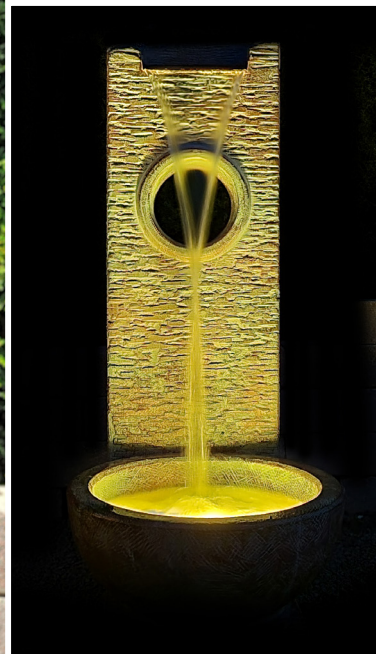
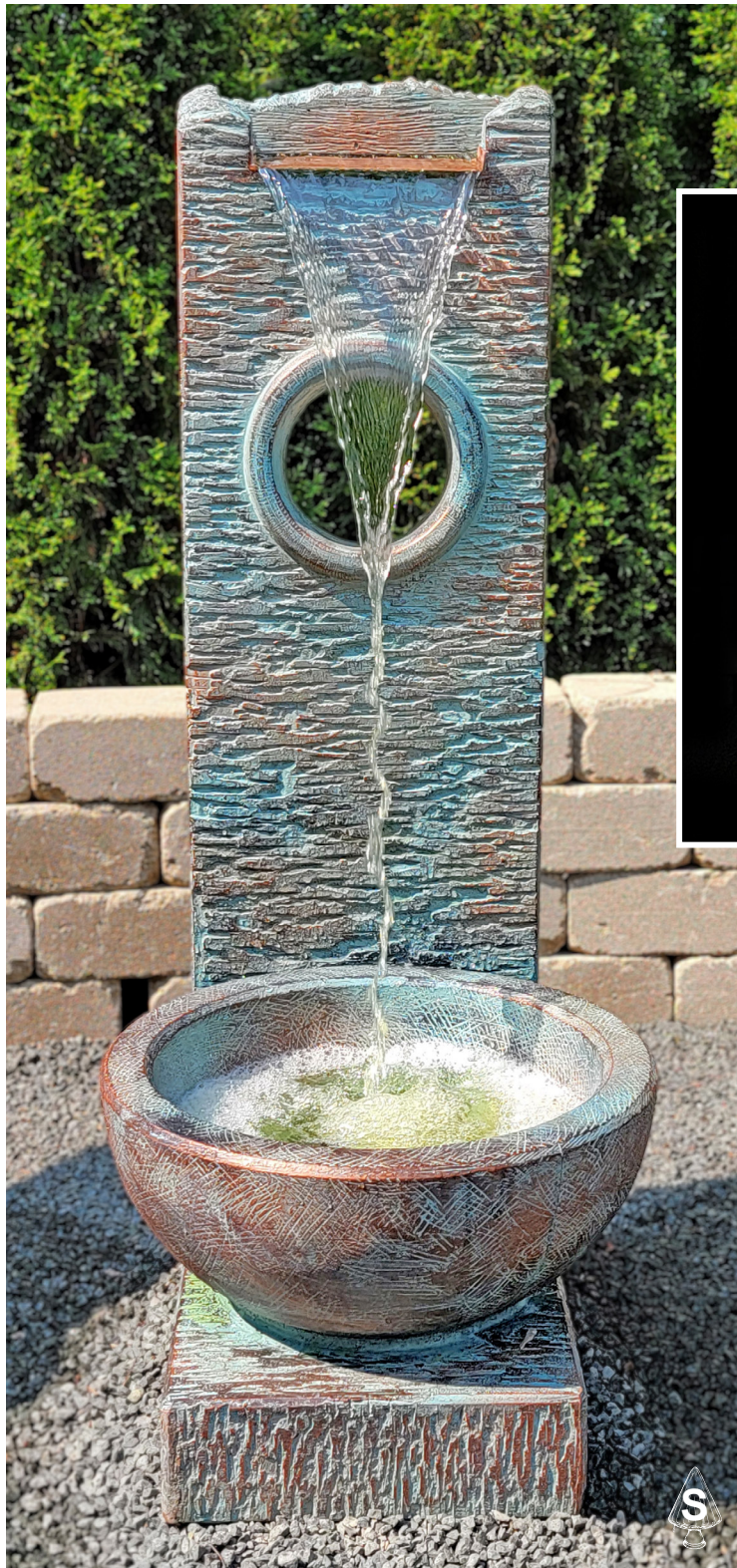
40 in. H, 15 in. W, 17 in. F-B

- Shown in Relic Hi-Tone (RR for LOVE, RL base)


No. 4419 LOVE single unit 40 in. H, 15 in. W, 17 in. F-B



Our **Oracle Wall Fountain's** open-air element projects a light and tranquil presence. A very Zen design indeed.

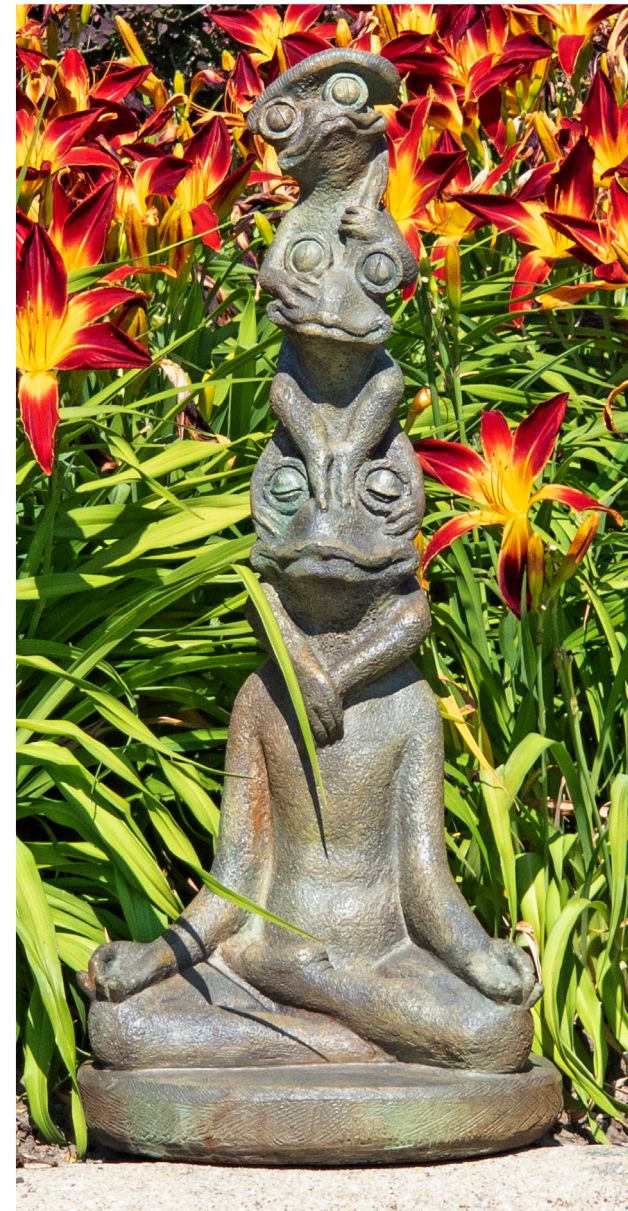


Brilliant Underwater LED light kit included for shimmering night-time effect.

 **4418F1 Oracle Fountain**
39 in. H, 16 in. W, 19 in. F-B
- Shown in Bronze Patina (BP)
No. 4418 Oracle single unit 39 in. H, 16 in. W, 19 in. F-B



Bring whimsy to your garden with this playful family of frogs that give their youngest a bird's-eye view, while dad keeps cool and mom goes with the flow. A spitter version has the youngest "spouting off" as well!



2907 Totem Frogs
33 in. H, 14 in. W, 11 in. F-B
- Shown in Relic Nebbia (RN)
No. 2907P – Spitter Version, Pump Not Included



"You lookin' at me?" says our **Otter with Attitude...** His look says it all.... And he's available as a spitter too!



2908 Otter with Attitude
21 in. H, 7 in. W, 8 in. F-B
- Shown in Relic Oak (RO)
No. 2908P – Spitter Version, Pump Not Included



Our **Maple Leaf Birdbath** offers layers of oversized maple leaves shaped into a welcoming respite for all of the birds in the neighborhood.



2452
Maple Leaf Birdbath
23 in. H, 19 in. W, 19 in. F-B

- Shown in Relic Hi-Tone (Top RS, Base RL)

No. 2452T Maple Leaf Birdbath Top Only 6 in. H, 19 in. W, 19 in. F-B
No. 2451P Leaf Pedestal 20 in. H, 16 in. W, 12 in. F-B



The **Bee/Pollinator Sanctuary** is a true work of art that allows your garden to flourish by providing 100 varying-sized nesting holes for non-stinging bees and pollinators.

- Concrete provides longevity and an ideal temperature range for pollinators
- The heavy structure stays in place anywhere in the garden
- Hardwood plugs at the rear make the holes a safe sanctuary for your garden's winged friends
- Always face it southeast to east in the garden
- Just a blast of water will provide easy clean out after newborn bees have emerged



Removable hard wood plugs



2120
Bee/Pollinator Sanctuary
52 in. H, 14.5 in. W, 14 in. F-B

- Shown in Relic Nebbia (RN)



Our **Gnome** family expands with the addition of three new awesome garden gnomes!



2095
"Gardener"
Garden Gnome
21 in. H

- Shown in Trevia GreyStone (TR)



2099
"Hiker"
Garden Gnome
21 in. H

- Shown in Trevia GreyStone (TR)



2093
"Dude"
Garden Gnome
21 in. H

- Shown in Trevia GreyStone (TR)



2097
"Smitten"
Garden Gnome
21 in. H

- Shown in Trevia GreyStone (TR)



2101
"Football" Garden
Gnome
23.5 in. H

- Shown in Trevia GreyStone (TR)



- Our **"Football" Gnome** is ready to take on all competitors... in a friendly sort of way of course!
- Our **"Golfer" Gnome** is always quiet on the tee box and will keep you company on the 19th hole as well.
- Our **"Rosie the Gardener" Gnome's** smile will be a constant source of sunshine in your garden!



2094
"Serve & Protect"
Garden Gnome
21 in. H.

- Shown in Trevia GreyStone (TR)



2098
"Angler" Garden Gnome
21 in. H

- Shown in Trevia GreyStone (TR)



2096
"Chef" Garden Gnome
21 in. H

- Shown in Trevia GreyStone (TR)



2102
"Golfer" Garden Gnome
22 in. H

- Shown in Trevia GreyStone (TR)



2103
"Rosie the Gardener"
Garden Gnome
22 in. H

- Shown in Trevia GreyStone (TR)



Henri Studio Finishes

Henri's vast array of rich and popular tones combine today's sophisticated color trends with historic old-world elegance, giving every Henri Studio creation an aura of timelessness.

Stone Wash Finishes

Henri's Stone Wash Finishes have soft and subtle hues, varying in their intensity, and providing a rich contemporary presence to your landscape design,



Acrylic Finishes

Traditional Henri finishes, achieved with layers of acrylic paints and antiques, tastefully replicate an ageless classic look.



Hi-Tone & Relic Hi-Tone Finishes

Subtle highlighting in which various Acrylic Paints or Relic Stains are applied for a lively, depth-revealing effect. Only select Henri items are available in Hi-Tone or Relic Hi-Tone, and these are usually depicted as such in the Henri Catalogue.



Hi-Tone (HT)

Hi-Tone Finishes



Relic Hi-Tone (RH)

Relic Stain Finishes

Relic's rich stains blend rustic earth tones into unique and striking combinations, resulting in one of a kind masterpieces. Within their color range, each Relic Stain finish will vary from lighter to darker, along with some intentional mottling. Relic Stains enhance and reveal the rich character sculpted into each and every Henri Studio creation.



Natural Finish

Henri cast stone without a stain or painted finish. Our Natural Stone is the most refined and unblemished cast stone available on the market.



Natural (NA)

MADE OF AMERICA



© 2023 Stonecasters, LLC

ALL RIGHTS RESERVED

Stonecasters, LLC 1250 Henri Drive Wauconda, IL 60084
www.HenriStudio.com Phone 1.800.323.4784 Fax 1.800.STATUE.1

Printed in U.S.A.